

LUMINA®

The ultimate ‘upgrade as you grow’ laser & IPL platform, offering practitioners the opportunity to dramatically increase their treatment portfolio without having to purchase multiple devices.

Medically CE-marked and listed on the NHS Supply Chain, the LUMINA® combines five different market-leading technologies into one stand-alone platform, helping treat over 24 different aesthetic concerns. Users have the flexibility to upgrade ‘upgrade as you grow’ to meet the needs of their growing practices.

Two highly effective IPL handpieces as standard, offering hair removal & **various skin rejuvenation treatment options**

Long-pulsed Nd:YAG upgrade available for those looking to treat **ALL skin types including darker skins**

Powerful Active Q-switched laser upgrade for **removal of multi-coloured tattoos**

Award-winning ResurFACE® fractional handpiece upgrade, available for **ablative** resurfacing **treatments** with minimal downtime



“ We have been very pleased with the performance of the LUMINA® but more than that, Lynton provides an excellent all-round service. When I ask their advice I am always impressed at the level of knowledge and expertise that exists in the company. We have a large NHS clinic, as well as a private clinic, and knowing that we can pick up the phone and always get an answer is important to us.

Professor Harry Moseley, Department of Dermatology, Ninewells Hospital Medical School, Dundee



Call Lynton today on 01477 536 977 or visit lynton.co.uk

System Specifications	Intense Pulsed Light
Wavelengths	585Plus Handpiece: 550 – 1100 nm 650 & 650 Advance Handpiece: 625 – 1100 nm
Pulse sequence duration	5 – 300 msec
Pulse sequencing	1 – 6 pulses
Maximum Repetition rate	up to 1 Hz
Maximum fluences	585Plus Handpiece 50 J/cm² 650 & 650 Advance Handpieces 40 J/cm²
Spot sizes (ILG)	5x1 cm², 2.5x1 cm², 1x1 cm² and 1 cm Diam Circular (optional)

System Specifications	Long Pulsed Nd: YAG Laser (Internal)	Handpiece
Wavelengths	1064 nm	1064 nm
Repetition rate	up to 1.0 Hz	1.0 Hz
Beam delivery	Articulated Arm 635 nm red aiming beam	
Maximum fluence	430 J/cm²	403 J/cm²
Spot sizes	4, 5, 6, 7 mm	3, 6, 8 mm

System Specifications	Fractional Handpiece - ResurFACE®
Wavelengths	2940 nm
Repetition rate	Up to 1.5 Hz with Pulse Stacking
Treatment zone	10 mm diameter
Fractional output	40 microspots per cm²
Energy per microspot	Up to 20 mJ

System Specifications	Q-Switched Nd: YAG Laser
Wavelength	532 nm and 1064 nm
Maximum energy at 1064nm	500 mJ
Maximum energy at 532nm	250 mJ
Repetition rate	Up to 5 Hz
Pulse duration	7 – 10 ns
Spot sizes	1.5 – 5 mm
Beam delivery	Articulated Arm

Physical Parameters	
Dimensions	111x42x95 cm (H x W x D)
Weight	125 kg
Mains supply	220 – 240 VAC, 13 A
Line frequency	50 – 60 Hz
Manufacturer	Lynton

*Other voltages are available on request

The Medical Devices Directive (Medical CE-marking) and Notified Body approvals for the LUMINA Intense Pulsed Light & Laser System only relate to the medical indications detailed in the accompanying Operator Manual.

Lynton Lasers Ltd

Lynton House, Manor Lane,
Holmes Chapel, Cheshire, CW4 8AF
Tel: +44 (0)1477 536 977
info@lynton.co.uk

www.lynton.co.uk

August 2023



LUMINA®

Upgrade As You Grow
Aesthetic Platform

add over 24 new revenue streams



British Manufactured



Fast, safe and effective treatment of multi-coloured tattoos with the ACTIVE Q-switched Nd:YAG 1064nm & 532nm laser

Large touchscreen interface with built-in client database, pre-set parameters and optimised controls*

650 & 585 IPL handpiece technology developed over the past 25 years, to provide unrivalled output and efficacy

Integrated treatment summary printer, with the option of added camera to provide before & after images for each client



*Screen image, not 100% accurate of final finished product

Upgrade As You Grow

With over 25 years of experience & expertise invested in its manufacturing, the LUMINA® has been designed to perfectly meet the demand of those looking for a single platform that can provide multiple different aesthetic treatments. A range of award-winning technologies are easily fitted to the LUMINA®, either from the outset, or upgraded to at a later stage, dependent on the exact needs of the user.

ILG™

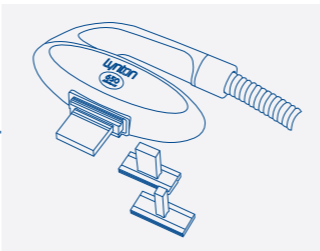
ILG™: Interchangeable Light Guide technology provides you with speed, precision and enhanced epidermal protection from bulk-heating.

ILG™ allows the practitioner to tailor the spot size for every client due to it's easy to use, snap-in design. Unrivalled spatially-selective targeting reduces discomfort in treatments, allowing more effective fluences to be safely used.

ILG™ also provides effortless positioning in contoured areas, such as a small red vein on the client's nose, or a large spot size for hair removal on the client's back.



UPGRADE OPTIONS



1. Intense Pulsed Light (IPL)

The 585 and 650 handpieces are supplied as standard and are the perfect combination for hair removal and skin rejuvenation treatments.

Standard applications with the LUMINA 650 & 585:

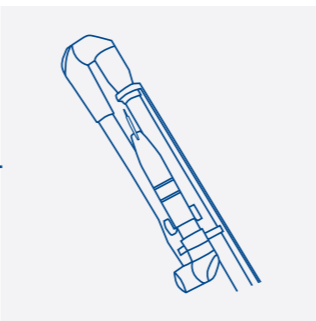
- Acne
 - Red Veins
 - Unwanted Hair
 - Skin Rejuvenation
 - Sun Damage
 - Pigmentation
- + more

Optional 650 Advance upgrade available



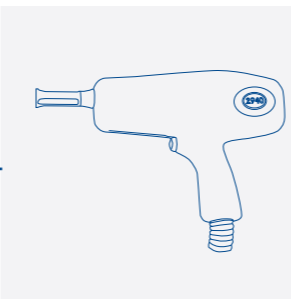
2. Long-Pulse Nd: YAG Laser (1064nm)

Detachable option for hair removal on darker skin types IV-VI. Nd:YAG can also be used to treat skin laxity, deeper vessels and fungal nails.



3. Active Q-Switched Laser (1064nm & 532nm)

Considered by dermatologists to be the safest and most clinically effective treatment for multi-coloured tattoos, the addition of a Q-switched laser opens up a whole new client range. Also effective on dermal and epidermal pigmentation.



4. ResurFACE® Fractional Laser (2940nm)

Add an award-winning fractional Erbium YAG ResurFACE® handpiece to achieve dramatic results on your clients. Use fractional ablative operating mode for a wide variety of applications, such as stretch marks, scarring, and fine lines & wrinkles.

Why ResurFACE®?



Voted Treatment of the Year - the award-winning ResurFACE® fractional laser (2940nm) is the ultimate upgrade available on the laser market.

By offering fractional resurfacing technology to their existing customer bases, our customers have seen dramatic results, helping their clients overcome serious aesthetic concerns with the following conditions:

- Lines and wrinkles
- Acne scarring
- Age spots
- Congestion
- Pigmentation
- Skin laxity
- Sun damage
- Milia
- Scarring
- Stretch Marks
- Uneven texture
- Freckles



I have worked with the Lynton LUMINA® within the NHS and have continually been impressed with the clinical results it delivers. Lynton have been amazing, they have been very supportive and very professional. The training I have had was very in-depth. I would be happy to recommend Lynton to anyone looking to introduce laser or IPL. I cannot praise you enough, first class service! 10/10.

Susan Richardson, Nurse (Laser), Dermatology at NHS Newcastle upon Tyne

To learn more or arrange a demonstration, call Lynton on 01477 536 977 or visit lynton.co.uk

LUMINA® Results

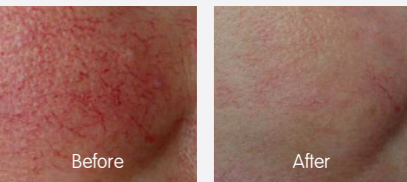
Hair Removal

Courtesy of Erazor Clinic



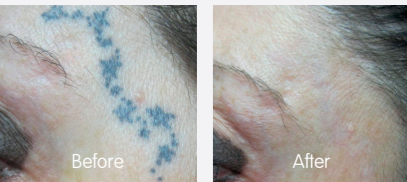
Red Vein Removal

Courtesy of Laser Skin Solutions



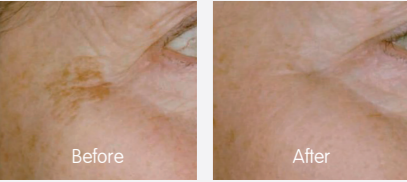
Tattoo Removal

Courtesy of Verity Clinic



Pigmentation

Courtesy of The Court House Clinic

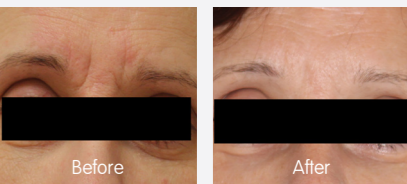


Acne

Courtesy of Laser Skin Solutions



ResurFACE® Deep Lines (Above Nose)



ResurFACE® Rejuvenation

Courtesy of DMK Laser

