



Call Lynton today on 01477 536 977 or
visit lynton.co.uk

EXCELIGHT®

Take your business to the
next level in advanced
treatments...

585 & 650 IPL



| System Specifications | EXCELIGHT® | |
|----------------------------------|--|----------------|
| IPL (Intense Pulsed Light) HP | 585 | 650 |
| Wavelength (nm) | 550 - 1100 nm | 625 - 1100 nm |
| Pulse Train Energy (J) | 10 - 250 J | 10 - 250 J |
| Individual Pulse Durations (IPL) | <1ms – 10 ms | <1ms – 10 ms |
| Pulse Sequencing | 2 – 6 pulses | 2 - 6 pulses |
| Pulse Delay (ms) | 10 – 60 ms | 10 – 60 ms |
| Repetition Rate (Hz) | Up to 1 Hz | Up to 1 Hz |
| Spot Size (cm) | 5.0 x 1.0, 2.5 x 1.0, 1.0 x 1.0 (standard) & 1.0cm Circular (optional) | |
| Fluence (J/cm²) | Up to 40 J/cm² | Up to 36 J/cm² |

| Physical Parameters | |
|---------------------|---------------------------------|
| Dimensions (cm) | 37 (w) x 65 (d) x 49 (h) |
| Handpiece | Interchangeable Quartz Blocks |
| Control Panel | Full colour LCD and Touchscreen |
| Weight (kg) | Approx 40 |
| Manufacturer | Lynton, UK |

The Medical Devices Directive (Medical CE-marking) and Notified Body approvals for the EXCELIGHT Intense Pulsed Light System only relate to the medical indications detailed in the accompanying Operator Manual.

Lynton Lasers Ltd
Lynton House, Manor Lane,
Holmes Chapel, Cheshire, CW4 8AF
Tel: +44 (0)1477 536 977
Fax: +44 (0)1477 536 978
info@lynton.co.uk

December 2020



EXCELIGHT® IPL

Made in Britain by the UK's No.1 IPL manufacturer & leading NHS supplier, the Lynton EXCELIGHT® offers businesses the opportunity to introduce the UK's most in-demand advanced aesthetic treatments in one compact and easy to use device.

Offering permanent hair reduction and a wide range of skin rejuvenation treatments, the Lynton EXCELIGHT® IPL is widely regarded by many Dermatologists as the most clinically effective IPL in the marketplace. Delivering industry-leading power and speed alongside easy to use, built-in treatment parameters, the Lynton EXCELIGHT® has been designed to ensure all practitioners can operate competently and carry out safe and effective IPL treatments.

Two highly effective IPL handpieces offering **multiple treatment options**

Designed to fit straight into any business looking to introduce advanced treatments, promising **rapid Return on Investment**

Performing over 10 different treatments, including **permanent hair reduction, vascular lesions, pigmentation & skin rejuvenation**

VOGUE BBC Daily Mail sky itv 5 TATLER Telegraph theguardian

“

I have never looked back after purchasing the IPL from Lynton. It has helped my business expand from a very small salon with three treatment rooms, to new premises with nine treatment rooms. Lynton's training and service is excellent. We have achieved fantastic results and have many happy clients. I would recommend Lynton to anyone wanting to start with a hair removal or skin rejuvenation decice”.

Becky Parkin

Lefroy
beauty therapy



INTERFACE PRO™



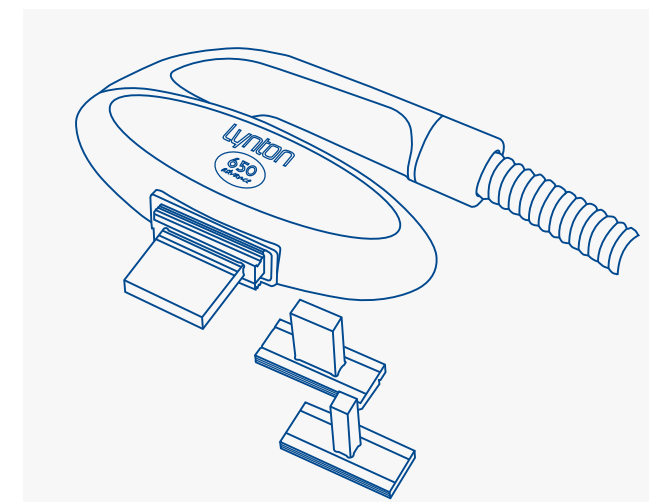
Intuitive pre-set parameters result in a quick learning curve for all operators. The **touch-screen treatment controls** (above) make the EXCELIGHT® simple and easy to use, which helps all practitioners feel confident in delivering advanced IPL treatments.

Manual override is available for all experienced practitioners wishing to tailor the output of the system for an individual client.

Lynton Intense Pulsed Light (IPL)

The 585 and 650 handpieces are supplied as standard and are the perfect combination for hair removal and skin rejuvenation treatments.

Handpieces are easy to change over, which, combined with the simple touchscreen interface, allows you to quickly select the treatment and protocols you require.



Applications with the EXCELIGHT® IPL:

- Hair Removal
- Thread Veins
- Rosacea
- Age Spots
- Skin Rejuvenation
- Skin Tightening
- Pigmentation
- Port Wine Stains

+ more



ILG™

ILG™: Interchangeable Light Guide technology provides you with speed, precision and enhanced epidermal protection from bulk-heating. ILG™ allows the practitioner to tailor the spot size for every client due to its easy to use, snap-in design. Unrivalled spatially-selective targeting reduces discomfort in treatments, allowing more effective fluences to be safely used. ILG™ also provides effortless positioning in contoured areas, such as a small red vein on the client's nose, or a large spot size for hair removal on a client's back.



Pigmentation

Courtesy of The Lynton Clinic

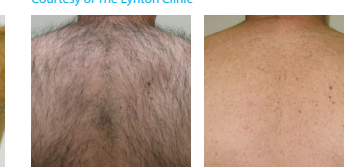


Before

After

Hair Removal

Courtesy of The Lynton Clinic



Before

After

Rejuvenation

Courtesy of The Court House Clinic



Before

After

Red Vein Removal

Courtesy of Kerry Belba | Laser Skin Solutions



Before

After

To learn more, or to arrange a demonstration, call Lynton on 01477 536 977 or visit lynton.co.uk