

Lift.
Firm.
Refine.



FOCUS_{DUAL}

In partnership with ES Global



Boost skin quality at every layer
with third-generation RF Microneedling
and HIFU technology.

Key Features

- Combine dual technology to offer your clients firmer, smoother and more radiant skin – all with one innovative machine.
- Clinically proven technologies for non-surgical lifting, firming and refining of the face and body.
- Improve the SMAS, reticular dermis, papillary dermis and epidermis in one single treatment.
- Tailor results for every skin concern with insulated and non-insulated needles, varying needle depths from 0.5mm to 3.5mm, 10 level RF settings and 7 HIFU focal depths.
- Treat all skin types – safe and effective for the face, body and every skin tone.
- Minimal downtime.
- Medical CE certified device.

Stand out in the industry with a treatment that meets the rising demand for non-surgical skin transformations.

Lift. Firm. Refine.



Non-surgical Skin
Tightening and Lifting



Refine Skin Quality



Stimulate Collagen



Improve Texture



Even Out Appearance
of Scars



Smooth Uneven Skin
Tone and Texture



Brighten Dull and
Lacklustre Skin



Tighten Sagging
and Crepey Skin



Wrinkle Reduction



Fat Reduction and
Body Sculpting

Why Focus Dual?

- ✓ Expand your treatment menu with dual-technology innovation.
- ✓ Attract clients seeking advanced solutions for lifting, firming and rejuvenation.
- ✓ Build trust with a CE-certified device backed by real results.

Proven Results



Skin Laxity | RF Microneedling = 3 x Treatments | Courtesy of True You Skin Clinic



Skin Laxity | HIFU = 2 x Treatments | Courtesy of Rediscovered Clinic



Skin Laxity | HIFU = 2 x Treatments | Courtesy of Medicare Cosmetics



Skin Laxity | HIFU = 1 x Treatment | Courtesy of Medicare Cosmetics

Product Features



Third-Generation RF Microneedling

Key Features:

- Unique vacuum technology to stabilise the microneedles for safer and more precise treatments.
- Ultra-thin needles (only 0.16mm in diameter) creating a safer treatment.
- Less discomfort, bleeding and downtime compared to other devices.
- Varying needle depths from 0.5 to 3.5mm allow energy to be placed in both the superficial and deep dermis for better results.

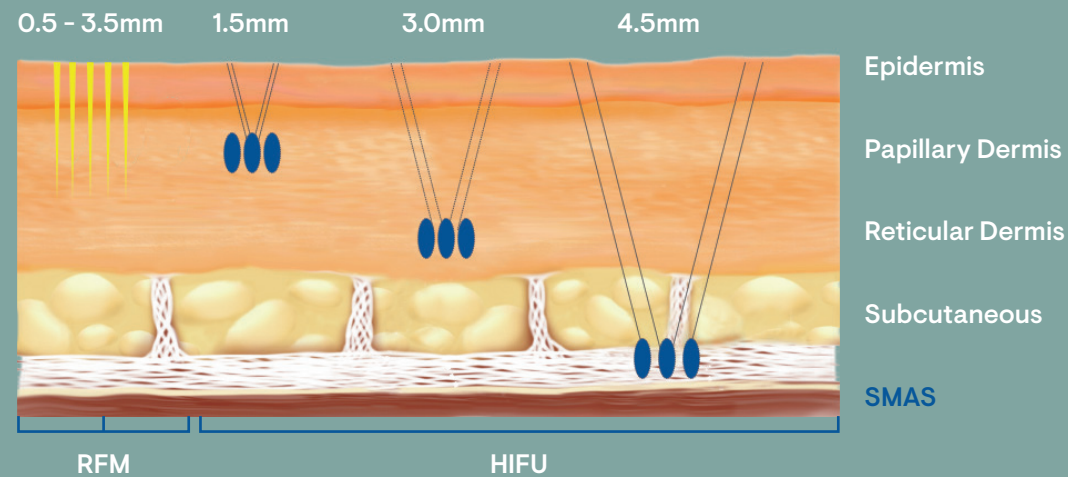


HIFU: The Facelift Without Surgery

Key Features:

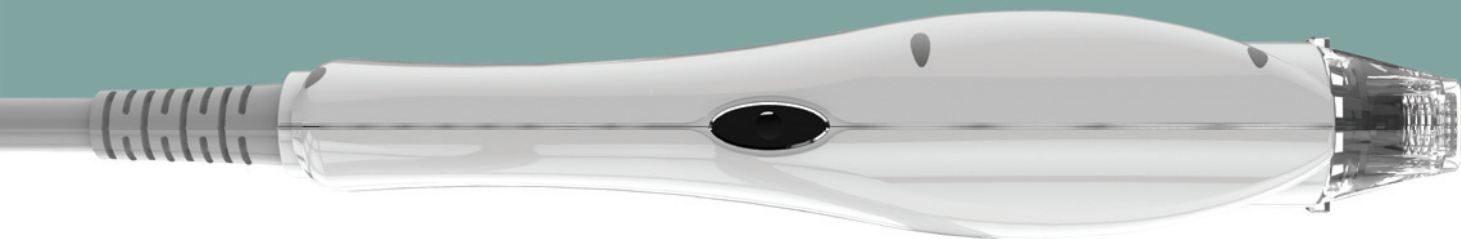
- Immediate tightening and lifting.
- Safety Assist Transducers (SAT), unique to the Focus Dual, reduce post-inflammatory hyperpigmentation and discomfort.
- Consistently reach optimal temperatures in different layers of the skin to achieve neocollagenesis to lift and tighten.
- Full body contouring, skin tightening and fat reduction.

Boost Skin Quality at Every Layer



With Focus Dual®, you can treat multiple layers of the skin including the SMAS, reticular dermis, papillary dermis and epidermis – all in a single session.

Expand your treatment portfolio, increase your revenue and deliver transformative results with this versatile technology.



Radiofrequency Microneedling (RFM)

Microneedling creates precision microchannels to refine skin texture, while radiofrequency (RF) delivers deep thermal energy to stimulate collagen renewal. Together, they rebuild stronger, firmer skin from within.

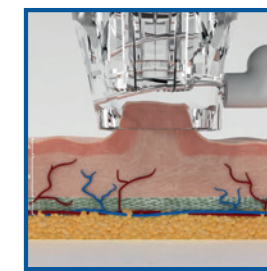
The adjustable needle depths, ranging from 0.5mm to 3.5mm, precisely deliver energy to both the superficial and deep dermis, enhancing treatment outcomes.

Vacuum technology stabilises the microneedles, ensuring safer, more precise treatments. This is particularly beneficial when treating the delicate eye area.

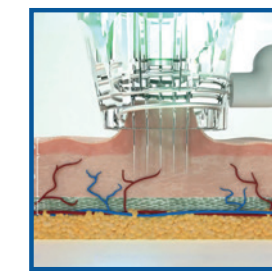
With RF Microneedling, tackle acne scars, wrinkles, laxity, stretch marks and enlarged pores – all in one treatment. The ultimate skin-rejuvenating powerhouse for real, visible results.

Insulated needles focus RF energy at the tip for deeper skin stimulation, while non-insulated needles can target all skin layers evenly. This adaptability enhances the overall treatment experience, allowing for comprehensive skin rejuvenation based on patient skin type and desired outcome.

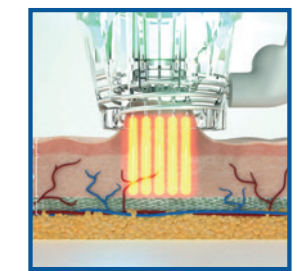
RF energy is delivered through the ultrafine insulated or non-insulated needles once they enter the skin



1. Vacuum



2. Needling



3. RF Energy Generation

Fibroblast Proliferation



Collagen Induction

High Intensity Focused Ultrasound (HIFU)

The SMAS layer – the layer a surgeon will target in a facelift – has always been tough to reach non-surgically. Until now.

With Focus Dual®'s HIFU, 65°C precision heat zones cause the SMAS layer to instantly contract for an immediate lift, while triggering collagen renewal for ongoing tightening over the following 12 weeks.

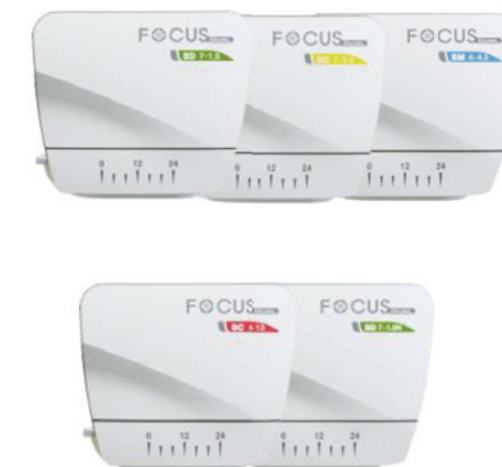
Focus Dual offers adjustable cartridge depths, with the 13mm and 6mm cartridges designed specifically for body shaping, while the 4.5mm, 3mm and 1.5mm cartridges target multiple skin layers to reduce wrinkles, crepiness and laxity.

Expect real results: sharper jawlines, defined cheekbones, reduced under-eye bags and lifted brows.

1.5mm: Effectively targets the superficial dermis where loosely arranged collagen fibre resides.

3.0mm: Targets the reticular dermis, stimulating fibroblasts.

4.5mm: Targets the SMAS layer where the most lifting efficacy of HIFU takes place.



Why Choose Lynton?

“



Trust

Lynton started from the Physics labs of the University of Manchester: As an energy for good. Crafting devices to define, renew, revive and sculpt for over 30 years, with the same scientists still as the founders and owners. The people you meet when you build your business with us are the faces and brains behind our tech. We are committed to delivering results you'll love.

Dr Jon Exley, Managing Director. PhD in Laser Physics

”

“



Tech

Delivering you quality in every product, whether handmade in the UK or sourced from top global brands. Your results are important, and we make sure we provide impartial advice to help you choose the best tech for your needs. Ensuring you have all you need to bring exceptional results to life.

Dr Ben Dickinson, Operations Director. PhD in Laser Physics



”

“



Training

Providing you aftercare is key; from clinical training and qualifications through to clinic marketing support, we want every single customer to get the best from their device and the industry. With over 50 years of collective real-world experience, our team have the type of creds that will fill their own page. We want to share that knowledge with you to keep you up to date with all the industry trends.

Dr Sam Hills, Clinical Director. PhD in Physics & Pharmaceutical sciences

”



Powered by Good Humans

Good humans are the heart of the Lynton business – passionate people who apply their PhDs, engineering abilities and customer experience daily to help you. Our aim is to deliver integrity through our people and our products to you – every day.



Multiple award winners
2016 – 2023



Powering your Success

- We partner with Eunsung Global who offers advanced medical and aesthetic technology, supported by exceptional research and development. Eunsung Global operates to the highest industry standards, ensuring international safety and compliance with regulatory guidelines.
- British manufacturer Lynton, and South Korean manufacturer Eunsung Global, bring almost 60 years' worth of combined aesthetic expertise to the UK aesthetic market.



Lynton Lasers Ltd.

Reviews 81 • Excellent
★★★★★ 4.9



I have purchased a Lynton Focus Dual...

I have purchased a Lynton Focus Dual and have been very impressed, not only with the device, but with the additional support that comes with it. I have been able to access a series of really useful marketing training, have access to a great business development advisor and have received excellent training for the actual device / treatment protocols. Support will also be on-going so I am able to reach out with any queries.

Date of Experience: 06 January 2025

Technical Specification

Focus Dual	
Energy Type	Radiofrequency and HIFU
Handpieces	Radiofrequency handpiece and HIFU handpiece
Input Power	AC 100 – 20V, 50/60Hz
Cartridge	SM 4-4.5 / DD 7-3.0 / SD 7-1.5 / SD 7-1.5N / SC 4-13 / SC 4-6
Needle	25 pin RF multi needle
Display	10.2inch LCD Touch Screen
Weight	11kg
Dimensions, mm (W x D x H)	497 x 437 x 329

The medical device CE-Certification under the European Medical Devices Directive (MDD) only relates to the medical indications for use detailed in the accompanying Operator Manual. It relates to the Focus Dual and accessories SD7-1.5, DD7-3.0 and SM4-4.5 only.



Call Lynton today on
01477 536 970 or visit **lynton.co.uk**