
LUMINA[®]

The ultimate “upgrade as you grow” laser & IPL platform, offering practitioners the opportunity to dramatically increase their treatment portfolio without having to purchase multiple devices.

LUMINA[®] combines five different market-leading technologies into one stand-alone platform, helping treat over 24 different aesthetic concerns. Users have the flexibility to “upgrade as you grow” to meet the needs of their growing practices.

Two highly effective IPL handpieces as standard, offering hair removal & [various skin rejuvenation treatment options](#)

Long-pulsed Nd:YAG upgrade available for those looking to treat [ALL skin types including darker skins](#)

Powerful Active Q-switched laser upgrade for [removal of multi-coloured tattoos](#)

Award-winning ResurFACE[®] fractional handpiece upgrade, available for [ablative](#) resurfacing [treatments](#) with minimal downtime

“

We have been very pleased with the performance of the LUMINA[®] but more than that, Lynton provides an excellent all-round service. When I ask their advice I am always impressed at the level of knowledge and expertise that exists in the company. We have a large NHS clinic, as well as a private clinic, and knowing that we can pick up the phone and always get an answer is important to us.

Professor Harry Moseley, Department of Dermatology,
Ninewells Hospital Medical School, Dundee



System Specifications		Intense Pulsed Light	
Wavelengths	585Plus Handpiece: 550 – 1100 nm 650 & 650 Advance Handpiece: 625 – 1100 nm		
Pulse sequence duration	Submillisecond - 10ms		
Pulse sequencing	1 – 6 pulses		
Maximum Repetition rate	up to 1 Hz		
Maximum fluences	585Plus Handpiece 50 J/cm² 650 & 650 Advance Handpieces 40 J/cm²		
Spot sizes (ILG)	5x1 cm², 2.5x1 cm², 1x1 cm² and 1 cm Diam Circular (optional)		
System Specifications		Long Pulsed Nd: YAG Laser (Internal)	Handpiece
Wavelengths	1064 nm		1064 nm
Repetition rate	up to 1.0 Hz		1.0 Hz
Beam delivery	Articulated Arm 635 nm red aiming beam		
Maximum fluence	430 J/cm²		403 J/cm²
Spot sizes	4, 5, 6, 7 mm		3, 6, 8 mm
System Specifications		Fractional Handpiece - ResurFACE®	
Wavelengths	2940 nm		
Repetition rate	Up to 1.5 Hz with Pulse Stacking		
Treatment zone	10 mm diameter		
Fractional output	40 microspots per cm²		
Energy per microspot	Up to 20 mJ		
System Specifications		Q-Switched Nd: YAG Laser	
Wavelength	532 nm and 1064 nm		
Maximum energy at 1064nm	500 mJ		
Maximum energy at 532nm	250 mJ		
Repetition rate	Up to 5 Hz		
Pulse duration	7 – 10 ns		
Spot sizes	1.5 – 5 mm		
Beam delivery	Articulated Arm		
Physical Parameters			
Dimensions	111x42x95 cm (H x W x D)		
Weight	125 kg		
Mains supply	220 – 240 VAC, 13 A		
Line frequency	50 – 60 Hz		
Manufacturer	Lynton		
			*Other voltages are available on request

*Other voltages are available on request

Lynton Lasers Ltd

Lynton House, Manor Lane,
Holmes Chapel, Cheshire, CW4 8AF

Tel: +44 (0)1477 536 977

info@lynton.co.uk

www.lynton.co.uk

May 2025

Aesthetics
AWARDS
Winner 2023

UK
CA

CE

LUMINA®

Upgrade As You Grow Aesthetic Platform

add over 24 new revenue streams



Lynton

British Manufactured



Fast, safe and effective treatment of multi-coloured tattoos with the ACTIVE Q-switched Nd:YAG 1064nm & 532nm laser

Large touchscreen interface with built-in client database, pre-set parameters and optimised controls*

650 & 585 IPL handpiece technology developed over the past 25 years, to provide unrivalled output and efficacy

Integrated treatment summary printer, with the option of added camera to provide before & after images for each client



EXPERTS IN
AESTHETIC
TECHNOLOGY
since
1994

*Screen image, not 100% accurate of final finished product

Upgrade As You Grow

With over 25 years of experience & expertise invested in its manufacturing, the LUMINA® has been designed to perfectly meet the demand of those looking for a single platform that can provide multiple different aesthetic treatments. A range of award-winning technologies are easily fitted to the LUMINA®, either from the outset, or upgraded to at a later stage, dependent on the exact needs of the user.

ILG™

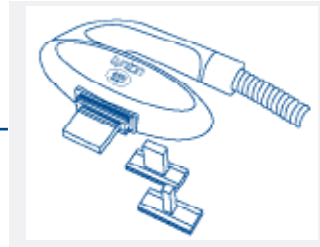
ILG™: Interchangeable Light Guide technology provides you with speed, precision and enhanced epidermal protection from bulk-heating.

ILG™ allows the practitioner to tailor the spot size for every client due to it's easy to use, snap-in design. Unrivalled spatially-selective targeting reduces discomfort in treatments, allowing more effective fluences to be safely used.

ILG™ also provides effortless positioning in contoured areas, such as a small red vein on the client's nose, or a large spot size for hair removal on the client's back.



UPGRADE OPTIONS



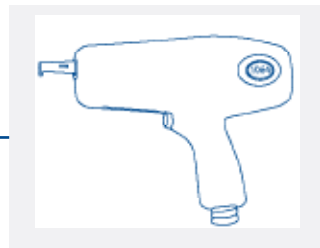
1. Intense Pulsed Light (IPL)

The 585 and 650 handpieces are supplied as standard and are the perfect combination for hair removal and skin rejuvenation treatments.

Standard applications with the LUMINA 650 & 585:

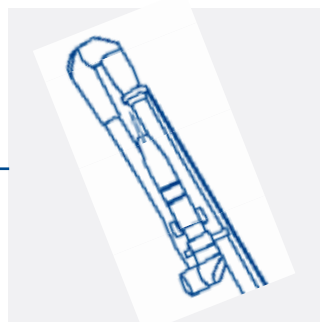
- Red Veins
- Unwanted Hair
- Skin Rejuvenation
- Sun Damage
- Pigmentation
- + more

Optional 650 Advance upgrade available



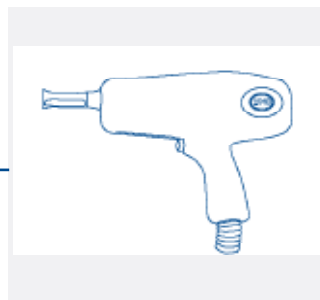
2. Long-Pulse Nd:YAG Laser (1064nm)

Detachable option for hair removal on darker skin types IV-VI. Nd:YAG can also be used to treat skin laxity, vessels and fungal nails.



3. Active Q-Switched Laser (1064nm & 532nm)

Considered by dermatologists to be the safest and most clinically effective treatment for multi-coloured tattoos, the addition of a Q-switched laser opens up a whole new client range. Also effective on dermal and epidermal pigmentation.



4. ResurFACE® Fractional Laser (2940nm)

Add an award-winning fractional Erbium YAG ResurFACE® handpiece to achieve dramatic results on your clients. Use fractional ablative operating mode for a wide variety of applications, such as stretch marks, fine lines and wrinkles.

Why ResurFACE®?



Voted Treatment of the Year - the award-winning ResurFACE® fractional laser (2940nm) is the ultimate upgrade available on the laser market.

By offering fractional resurfacing technology to their existing customer bases, our customers have seen dramatic results, helping their clients overcome serious aesthetic concerns with the following conditions:

- Lines and wrinkles
- Skin laxity
- Uneven texture
- Age spots
- Sun damage
- Congestion
- Milia
- Pigmentation
- Stretch Marks

“

I have worked with the Lynton LUMINA® within the NHS and have continually been impressed with the clinical results it delivers. Lynton have been amazing, they have been very supportive and very professional. The training I have had was very in-depth. I would be happy to recommend Lynton to anyone looking to introduce laser or IPL. I cannot praise you enough, first class service!
10/10.

Susan Richardson, Nurse (Laser), Dermatology
at NHS Newcastle upon Tyne

To learn more or arrange a demonstration, call
Lynton on 01477 536 977 or visit lynton.co.uk

LUMINA® Results

Hair Removal

Courtesy of Erazor Clinic



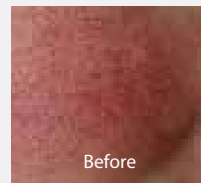
Before



After

Red Vein Removal

Courtesy of Laser Skin Solutions



Before



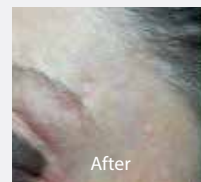
After

Tattoo Removal

Courtesy of Verity Clinic



Before



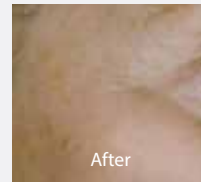
After

Pigmentation

Courtesy of The Court House Clinic



Before



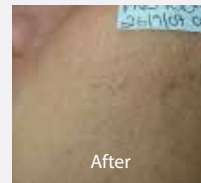
After

Congestion

Courtesy of Laser Skin Solutions

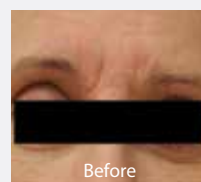


Before

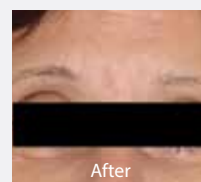


After

ResurFACE® Deep Lines (Above Nose)



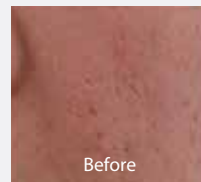
Before



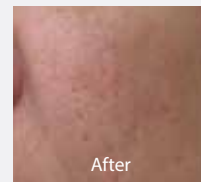
After

ResurFACE® Rejuvenation

Courtesy of DMK Laser



Before



After